

# Fleet's Critical Role in Disaster Recovery and Response



**Thursday, September 18, 2025**

- 11:00 a.m. - 12:00 p.m. ET
- 10:00 a.m. - 11:00 p.m. CT
- 9:00 a.m. - 10:00 a.m. MT
- 8:00 a.m. - 9:00 a.m. PT

This program is sponsored by  
the APWA Fleet Management Committee



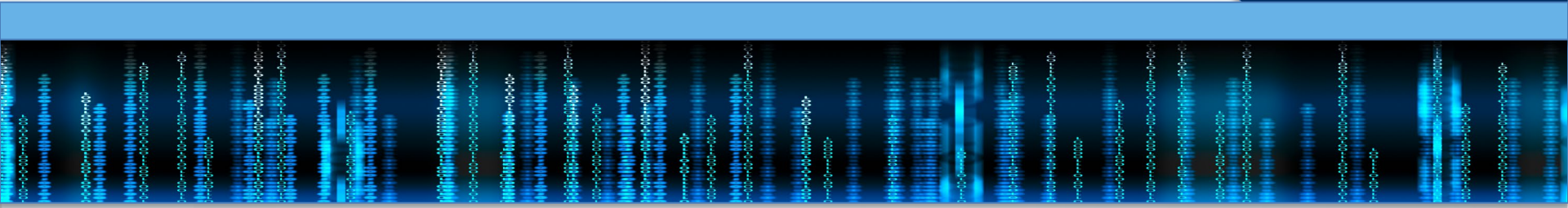


Speakers and instructors for APWA education offerings are practitioners and experts in public works and infrastructure issues and solutions. Some may have proprietary interest in services and products used by public works agencies and professionals.

Speakers for APWA educational offerings agree to refrain from specific product or services endorsements or promotions during APWA educational offerings.

## APWA Proprietary Interest Disclosure Statement

**Today's  
Program is  
eligible for .1  
Continuing  
Education Unit  
(CEU) credits.**





A link to the program evaluation will be emailed to you after the program.

To request CEU's - you must correctly answer 80% of the questions.



*APWA has been accredited as an Authorized Provider by the International Association for Continuing Education and Training (IACET), 1760 Old Meadow Road, Suite 500, McLean, VA 22102; (703) 506-3275.*



# RESOURCE CENTER

**ONE PLACE** where a member can access:

- Past Click, Listen & Learn (CLL) presentations
- Content from past conferences (PWX and Snow)

All searchable by topic. All without any extra fees beyond membership dues! No limits to how often you access or open the items in the Resource Center.

**No travel. No scheduling hassles. No delays while waiting for someone else's approval. No waiting for registration payment to be processed.**

For more information go online to  
[www.apwa.org/resources/resource-center](http://www.apwa.org/resources/resource-center).



Handout for Today's Program can be download from the right-hand chat panel.

The screenshot displays a Zoom meeting interface. At the top, the header shows 'Maintenance' and the 'AMERICAN PUBLIC WORKS ASSOCIATION' logo. A red arrow points from the logo to the 'Resources' panel on the right. The 'Resources' panel lists two documents: 'Handout Dealing with Mixed Precipitation in Winter Weather.pdf' and 'Winter Maintenance Discussion Guide-10-24-24.pdf'. A red arrow points to the download icon (a downward arrow) next to the first document. A smaller inset window shows a chat interface with the same APWA logo and a 'Chat' button. A red arrow points to the 'Chat' button in the inset window. The main chat window shows a list of messages, including one from 'Natalie Tucker, Education Specialist, APWA'.



# Viewing the Presentation

Precipitation in Winter Maintenance

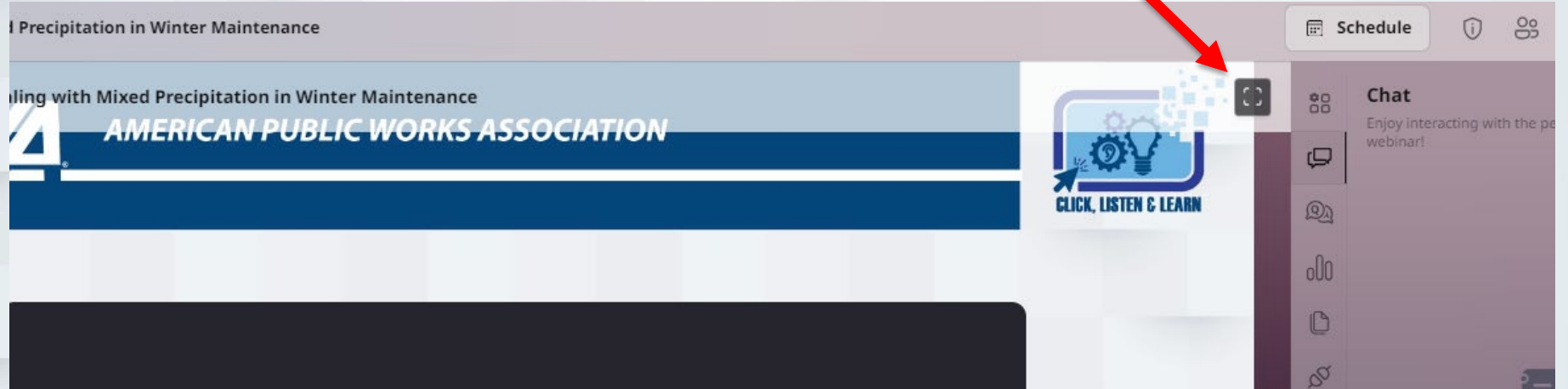
Working with Mixed Precipitation in Winter Maintenance

**AMERICAN PUBLIC WORKS ASSOCIATION**

**CLICK, LISTEN & LEARN**

**Schedule**

**Chat**  
Enjoy interacting with the presenters during the webinar!

A screenshot of a webinar interface. The main area displays a presentation slide titled "Precipitation in Winter Maintenance" with a subtitle "Working with Mixed Precipitation in Winter Maintenance" and the "AMERICAN PUBLIC WORKS ASSOCIATION" logo. Below the slide is a dark blue bar with the text "CLICK, LISTEN & LEARN". To the right is a sidebar with a "Schedule" button, a "Chat" window with the text "Enjoy interacting with the presenters during the webinar!", and a vertical list of icons for navigation. A red arrow points to a small icon in the top right corner of the presentation area.

# Communication & Engagement Opportunities

Copy of Managing Public Art in the Right-of-Way

**APWA** AMERICAN PUBLIC WORKS ASSOCIATION

Session will resume shortly  
**Session number 2**

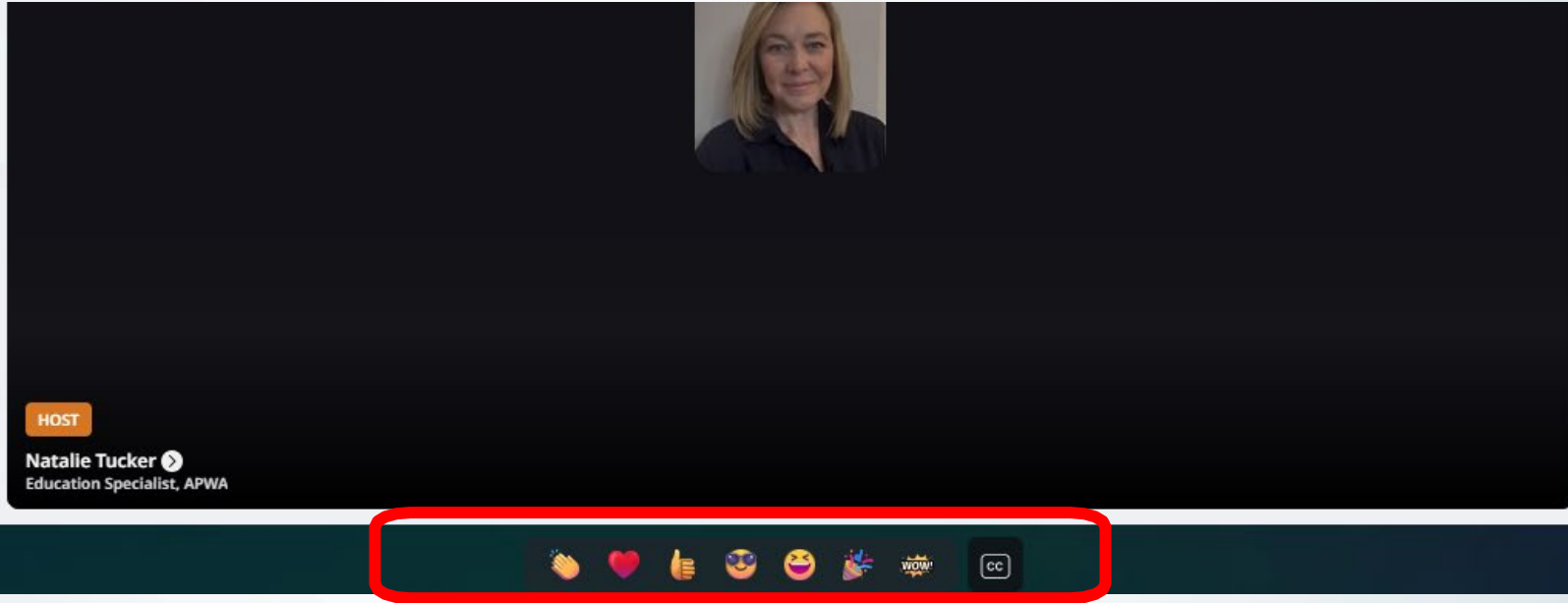
**Chat**  
Enjoy interacting with the people in this webinar!

NT You just now  
Good Morning everyone so glad to see you!

CLICK, LISTEN & LEARN



# Reactions



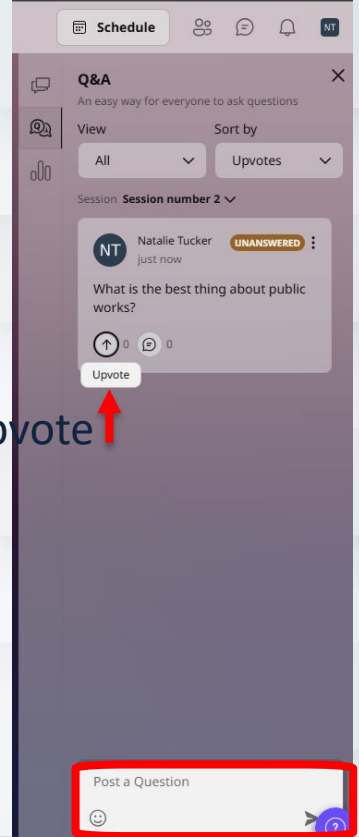


# Program Questions

1. If you have questions for our speakers, you may ask them using the Q&A feature.
2. Choose to Upvote a question that is the same as your question.

Q & A →

Upvote ↑



## Today's Moderator:



Sarah Marks

Assistant Director of Public  
Works-Fleet Manager  
City of Moline, Illinois

# Learning Objectives

After completing this course, participants will be better able to:

- Identify the essential functions of fleet operations during various types of natural disasters including floods, hurricanes, wildfires, and ice storms.
- Develop effective communication and collaboration strategies for fleet departments before, during, and after a disaster.
- Describe effective training and planning strategies for fleet departments to enhance operational readiness and response coordination.



Nominations to join an APWA knowledge team or subcommittee are considered year-round. Share your interest via the QR code below.



# Get Involved with APWA

# Today's Speakers



Scott McIver  
Fleet Manager  
City of Greenville, South Carolina



Bradley Northup  
Public Works Superintendent  
City of Carlsbad, California



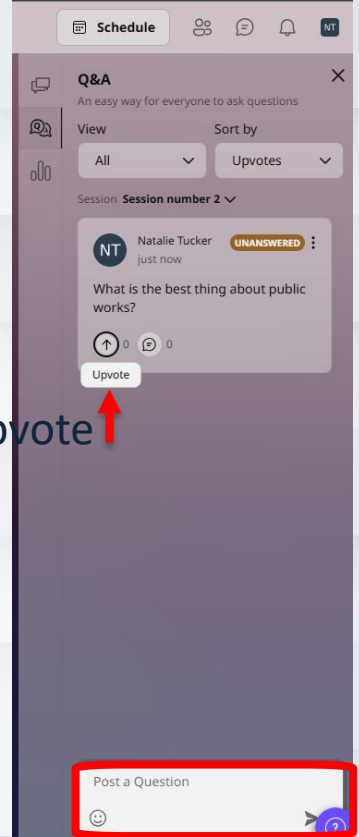
Vincent Olsen  
Interim Director  
City of Dallas, Texas

# Program Questions

1. If you have questions for our speakers, you may ask them using the Q&A feature.
2. Choose to Upvote a question that is the same as your question.

Q & A →

Upvote ↑







**Please join us in  
the virtual lounge  
for continued  
discussion**





# Lessons Learned as a Fleet Manager During a FEMA-Level Event

Scott McIver, CPFP, CAFM  
Fleet Manager  
City of Greenville, SC

Bradley Northup  
Public Works Superintendent  
City of Carlsbad, CA

Vincent Olsen, CPFP  
Director Equipment and Fleet  
Management  
City of Dallas, TX

# Agenda

FEMA Training – Preparation & Recovery

The Myth of Being Fully Prepared

Documentation: Your Greatest Asset

Takeaways & Future Planning



# Context – The Event

- FEMA-level hurricane event in upstate SC
- Uncommon weather for our region
- Immediate impacts:
  - Power outages
  - Flooding
  - Road blockages
  - Emergency operations activated





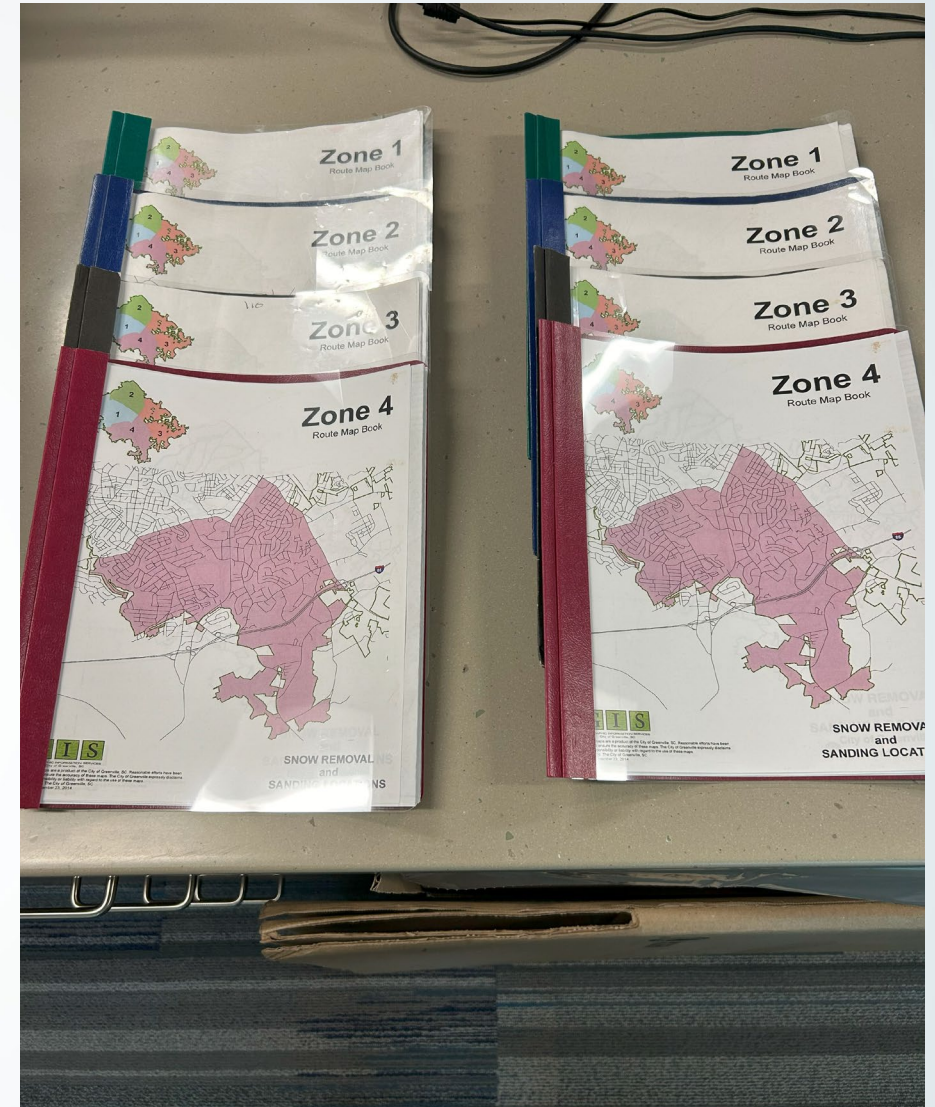
# Lesson 1 – FEMA Training Is Invaluable

## Before the Event

- [ICS & NIMS training completed beforehand](#)
- Knowledge of command structures
- Role identification in emergency hierarchy
- Desktop exercises & simulations
- Knowledge of weather conditions & severity



CLICK, LISTEN & LEARN



# During the Event

- Coordinate equipment requests across departments
- Used standardized terminology
- Reduce miscommunication







# After the Event – Public Assistance

- -FEMA Public Assistance program requires:
- \*\*\*Precise labor and equipment records\*\*\*
- Cost eligibility tracking
- Training helped streamline our claims process

<https://www.fema.gov/assistance/public/tools-resources/schedule-equipment-rates>

<https://training.fema.gov/>



# Lesson 2 – You’re Never Truly Prepared

Don’t have a False Sense of Preparedness

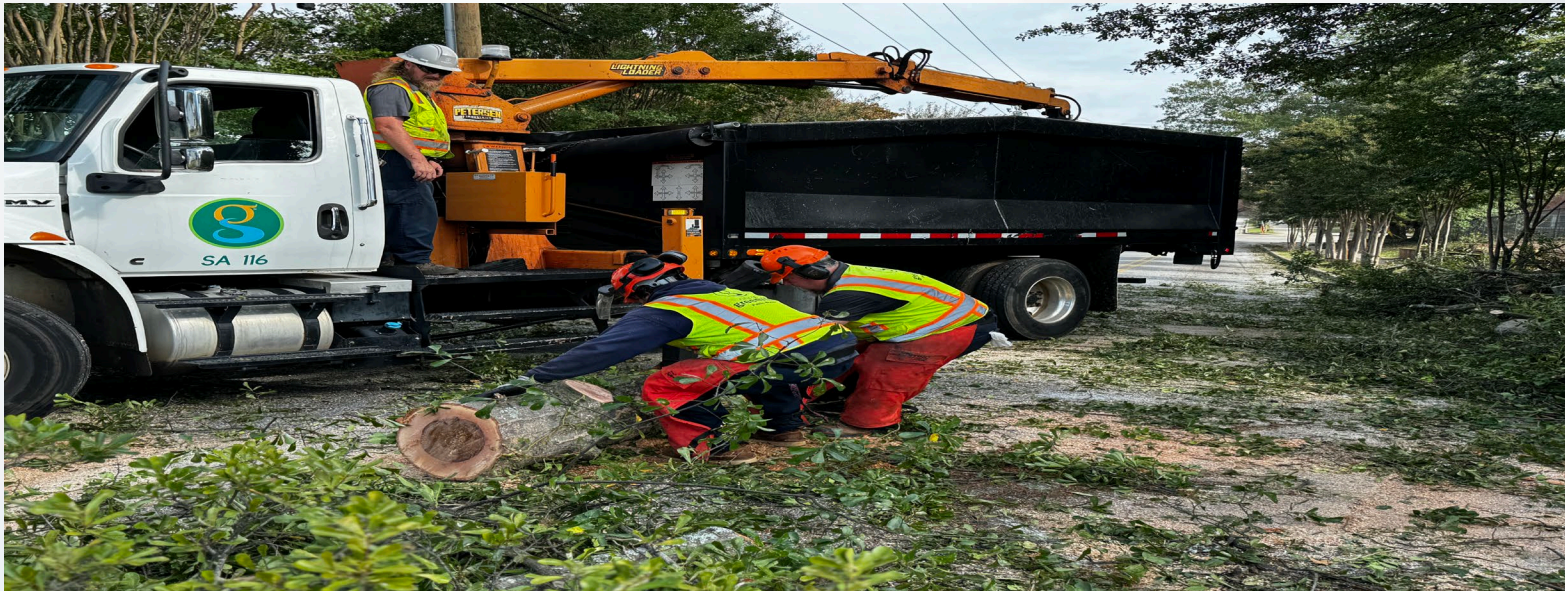
What do you prepare for?

- Ice storms
- Wind damage
- Thunderstorms

Hurricanes? Not a high priority for me.

# Real-Time Challenges

- Debris blocked key routes
- Demand outpaced barricade and fuel supply
- Fatigue from 24-hour shifts



# FEMA's THIRA Methodology



Identify and assess  
all hazards



Plan for high  
impact low  
probability events



Update Continuity  
of Operations Plan  
(COOP) annually

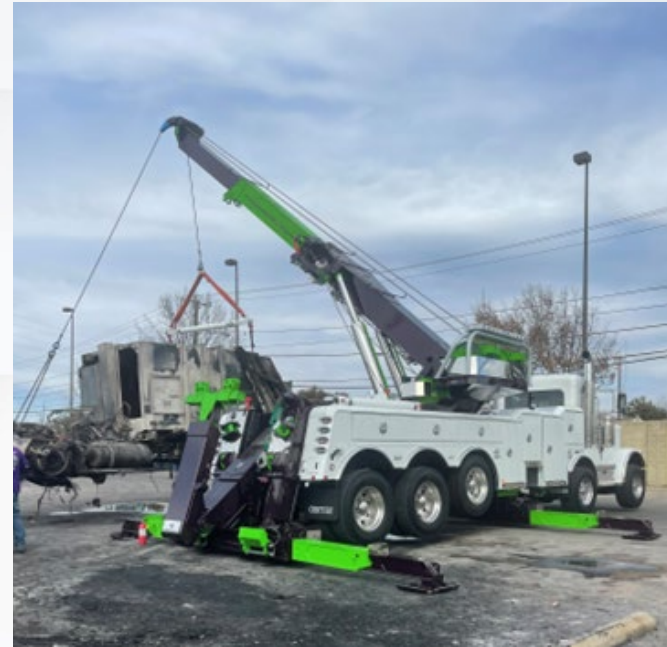




# Evaluation Phase

## Identify the Crisis

- Is this a Local, Regional or National level crisis?
- What equipment might be needed?
- What existing emergency response plans should be activated?



# Resource Phase

## Examine available resources

- How do I ensure staffing and their welfare?
- How do I ensure resource delivery and supply?
- Do I have the tools to function without electricity or other infrastructure?

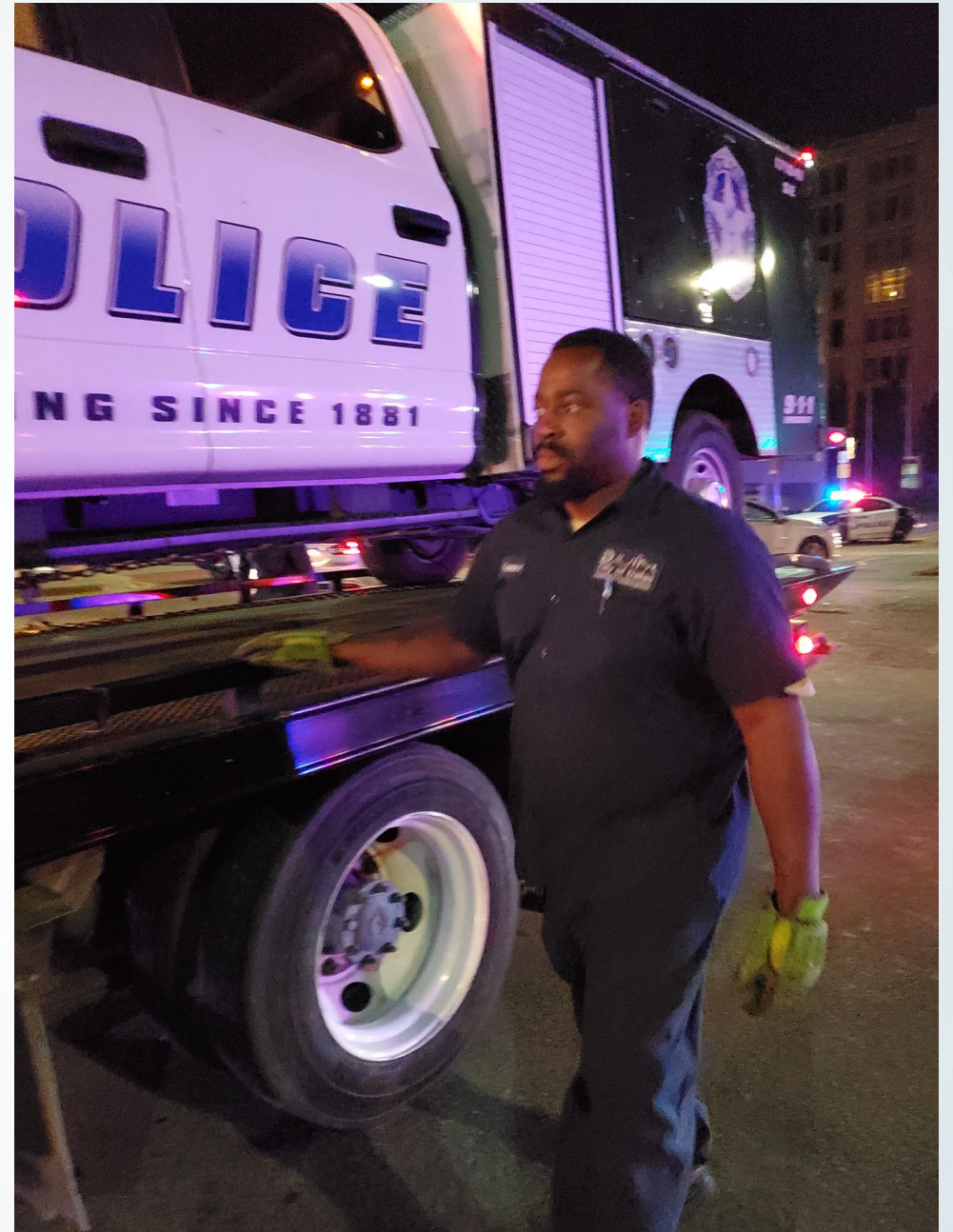




# Execute

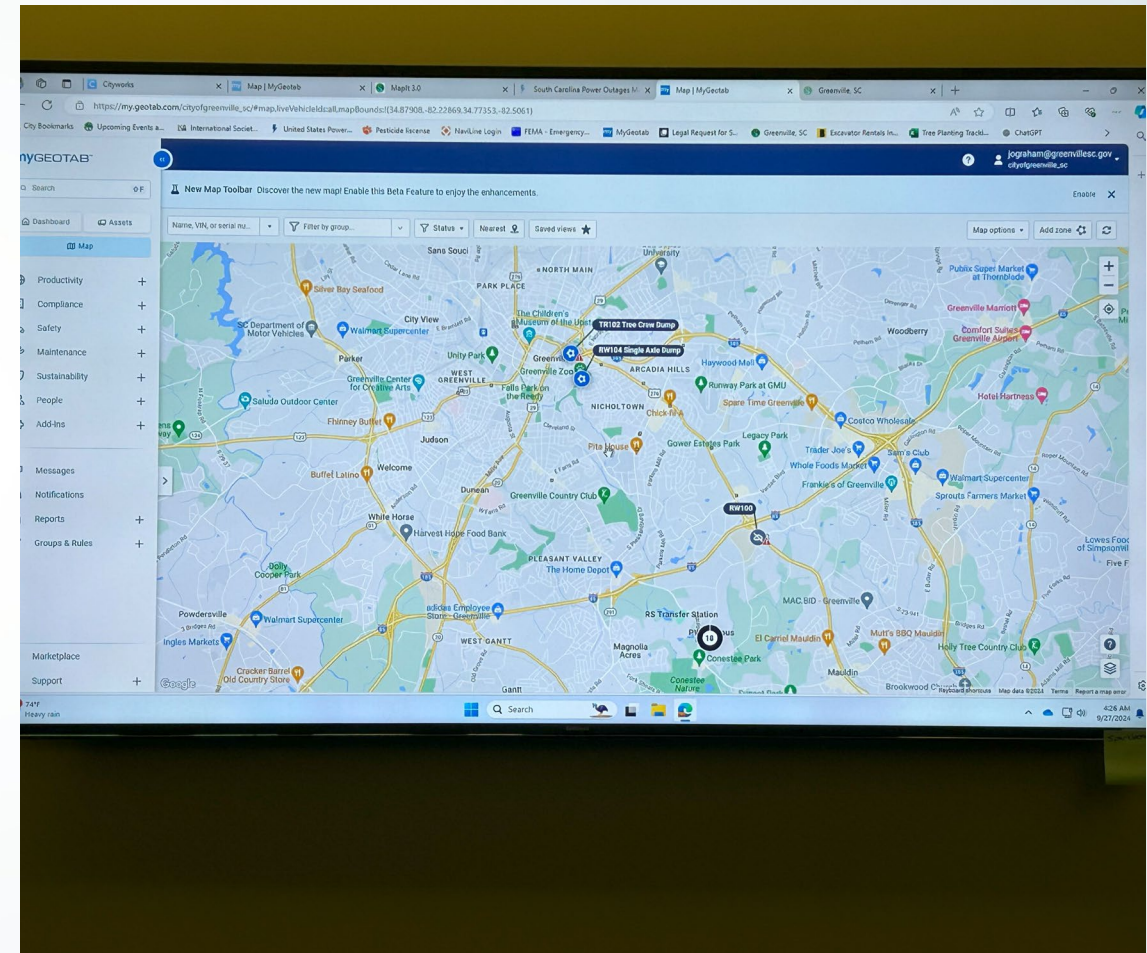
## Perform

- Monitor resource performance?
- Anticipate sustainability?
- When to engage second and third levels of support?



# Lesson 3 – Document Everything

- Why Documentation Matters
- FEMA reimbursement depends on:
  - Usage logs
  - Labor records
  - Equipment repair/damage reports
  - \*\*No record = no reimbursement\*\***
- Emergency & Expedited needs challenge documentation processes



# Electronic vs. Handwritten Logs



- Fleet Information Management System (FIMS):



- Time-stamped



- Easily shared and stored



- Handwritten notes only as a backup





# Real Example: Unit Reimbursement

- Flood-damaged unit
- FIMS records:
  - Pre-/post-storm inspections (Photos are best)
  - Repair photos
  - Labor hours (SRTs)
- Result: Full FEMA reimbursement

# Data-Driven Recovery

- Post-event analysis:

- Which units were overused

- Which resources were understocked

- Technician workload data

- Used for better planning

# Key Takeaways

FEMA training pays off – before, during, and after

Preparedness is about flexibility, not perfection

Digital documentation is essential for funding and review





# Improvements Since the Event

Broadened disaster planning (THIRA model)



Expanded digital FIMS use



Cross-trained staff for flexible deployment



Conducted post-event after-action reviews

# Suggested FEMA Courses

- **ICS-100: Introduction to the Incident Command System:** This course introduces the Incident Command System (ICS), a standardized approach to incident management, and explains its principles and organizational structure.
- **IS-200: Basic Incident Command System for Initial Response:** This course builds upon the ICS-100 by focusing on how the ICS applies to incidents involving single resources and initial response.

# More Courses

- **IS-700: National Incident Management System, An Introduction:** This course provides an introduction to the National Incident Management System (NIMS) and how it provides a consistent framework for coordinating incident response across different organizations.
- **IS-800: National Response Framework, An Introduction:** This course introduces the National Response Framework (NRF), a guide to how the nation conducts all-hazards response, and describes the roles and responsibilities of the whole community in responding to incidents.



**“Preparedness is not a destination—it’s  
a constant process.”**

Scott McIver  
864-749-0715  
smciver@greensville.gov

Vincent Olsen  
vincent.olsen@dallas.gov

Bradley Northup  
Bradley.northup@carlsbadca.gov