



PWX PUBLIC WORKS EXPO SAN DIEGO

APWA

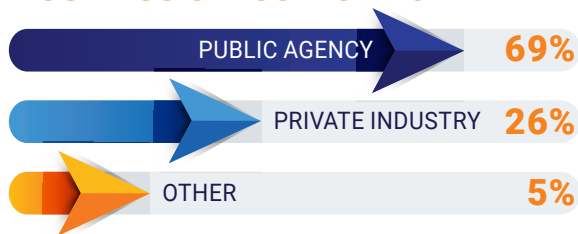
SAN DIEGO CONVENTION
CENTER

August 27-30, 2023 | #PWX2023

**SHOWCASE YOUR COMPANY AT THE
LARGEST PUBLIC WORKS MARKETPLACE!**

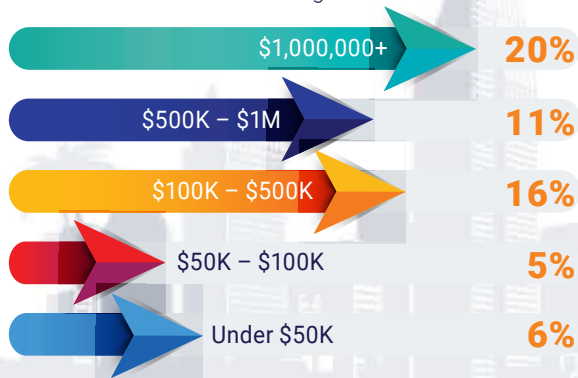
PWX connects the entire public works industry, all in one place and at one time. It's where the industry determines what's new and what's next and finds innovative solutions to help make communities thrive. Exhibit at PWX 2023 in beautiful San Diego and cultivate relationships with new buyers and reconnect with current customers to drive your business forward. **Reserve your PWX 2023 booth today!**

BUSINESS CLASSIFICATION*

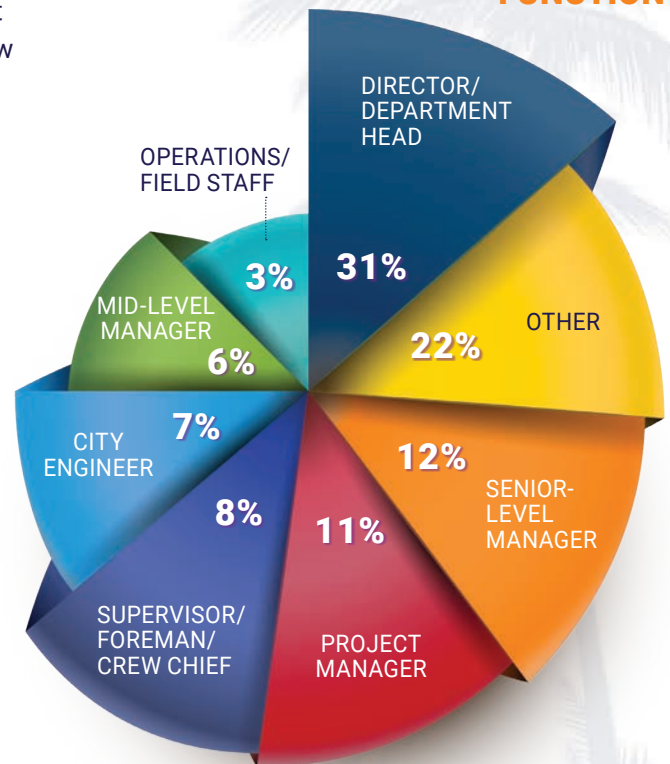


PURCHASING POWER

More than 87% of attendees are involved in purchasing decisions with estimated budgets of:



PRIMARY JOB FUNCTION



**RESERVE YOUR PWX 2023
BOOTH TODAY!**

Reinforce your market presence and expand your connections across all aspects of the vibrant public works community. Featuring more than 5,000 industry professionals, PWX is an event you can't afford to miss!



SAN DIEGO CONVENTION CENTER

August 27-30, 2023
#PWX2023

EXHIBIT HALL HOURS

Sunday, August 27
Noon – 4:00 p.m.

Monday, August 28
9:00 a.m. – 3:00 p.m.

Tuesday, August 29
9:00 a.m. – 1:00 p.m.

EXHIBIT SPACE FEES**

Early Bird Rate: \$28.50 per sq. ft.
After October 21: \$30.00 per sq. ft.

* Source: PWX 2021 registration data.

** Booth cancellations must be on or before October 21, 2022. After this date, a 25% cancellation liability fee will be owed.

WHO SHOULD EXHIBIT?

If your company is involved with providing solutions and services for any of the below areas, exhibiting at PWX is for you:

- Asset Management
- Cybersecurity
- Emergency Management
- Engineering/Construction
- Facilities
- Fleet Services
- Geographic Information Systems and Mapping
- Operations
- Parks and Grounds
- Snow/Ice Control
- Solid Waste
- Storm Water/Flood Control
- Streets/Roads/Bridges
- Sustainability
- Traffic/Transportation
- Utilities and Right-of-Way
- Water/Wastewater

A donut chart with an orange outer ring and a white inner circle. The number '85%' is written in a large, bold, dark blue font in the center of the white circle. The orange ring represents 85% of the total, while the white circle represents the remaining 15%.

85%

**85% OF PWX 2021 EXHIBITORS
RATED PWX SATISFACTORY
OR BETTER!**

RESERVE YOUR PWX 2023 BOOTH TODAY!

Contact: Tony Hayes, PWX Exhibit Sales | 571-313-5793 | PWXsales@taffyevents.com | pwx.apwa.net